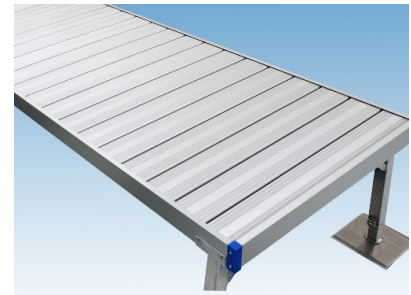
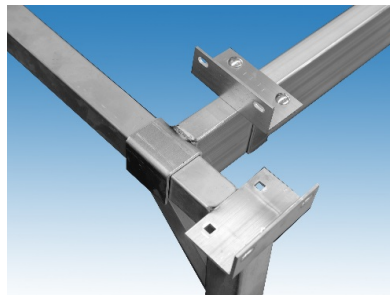




## "VECTOR" Adjustable Under Dock Support System

### FEATURES

- Superior Stability with 5° "Vector" Design
- Adjustable Width for 3ft and 4ft Dock
- Adjustable Height
- Large 12 in Foot Pads with Freeze Protection Drainage
- Strong and Sturdy
  - ✓ Welded 2-3/8in and 2in Square Tube Construction
- Sizes
  - ✓ Width: 3ft to 20ft
  - ✓ Height: Ranges from 1ft to 10ft
  - ✓ Custom
- Modular Design
  - ✓ Easily Add Sections
  - ✓ Easily Construct Platforms, T-Shaped and L-Shaped Dock
- Quick and Easy Installation and Removal



*Lifetime  
Warranty\**

Hart Fabrication, Inc.  
890 E. Chicago Road  
Quincy, MI 49082  
517.617.7349  
ahart@hartfab.com